



**METAL
TREATING
INSTITUTE**

[p] 904.249.0448
[f] 904.249.0459
504 Osceola Ave.
Jacksonville Beach, FL 32250-4030

The Largest Network of Commercial Heat Treaters in the World.

www.CallMTI.com

Press Release – Monthly Sales Statistics Report

IMMEDIATELY

Metal Treating Sales Increase 1.6% in 2008

Metal Treaters reported \$863.3 million in sales in 2008, a growth of 1.6% over 2007 sales which totaled \$849.6 million.

December 2008 saw a 9.3% reduction in billings from the previous December. December 2008 billings reached \$56.5 million compared to \$62.3 million in December 2007.

One district tallied higher sales in December. Five districts ended the year with higher sales than in 2007.

A summary of percentage change by geographic regions follows:

<u>District</u>	Dec. 08 vs. Total 2008	
	<u>Dec. 07</u>	<u>vs. 2007</u>
1 New England (CT-ME-MA-NH-RI-VT)	-0.4	4.6
2 Middle Atlantic (NY-NJ-E.PA-MD)	-5.6	-0.9
3 South Central (W.PA-OH-IN-KY)	-18.0	-0.7
4 Michigan	-28.2	-7.2
5 Southeast (VA-WV-NC-SC-GA-AL-TN-FL-MS)	-5.0	10.4
6 North Central (IL-WI-MN-MO-IA--KS)	-7.3	5.9
7 Pacific Coast (CA-AZ-OR-WA)	-4.5	3.8
8 Southwest (TX-OK-AR-CO-LA-UT)	26.8	9.6
9 Canada	-20.7	-7.3

Metal Treating Institute
 504 Osceola Ave.
 Jacksonville Beach, Florida 32250
 Analysis of National Billings
 December, 2008

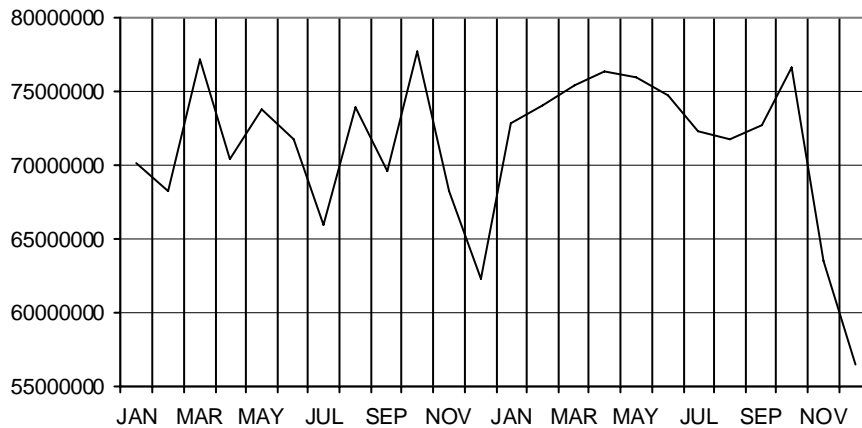
Billings for Month

District	Participating Members	Billings for Month	Billings for Month	% Change	Monthly % of Billings	Monthly % of Billings
		2007	2008		2007	2008
Total	158	62295.6	56506.4	-9.3	100	100
District 1	8	2179.0	2170.1	-0.4	3.5	3.8
District 2	19	5672.3	5353.1	-5.6	9.1	9.5
District 3	37	12626.5	10352.6	-18.0	20.3	18.3
District 4	19	8444.5	6063.4	-28.2	13.6	10.7
District 5	15	3865.0	3671.2	-5.0	6.2	6.5
District 6	27	14312.0	13262.8	-7.3	23.0	23.5
District 7	16	6265.3	5984.7	-4.5	10.1	10.6
District 8	10	5403.3	6850.9	26.8	8.7	12.1
District 9	7	3527.8	2797.8	-20.7	5.7	5.0

Billings to Date

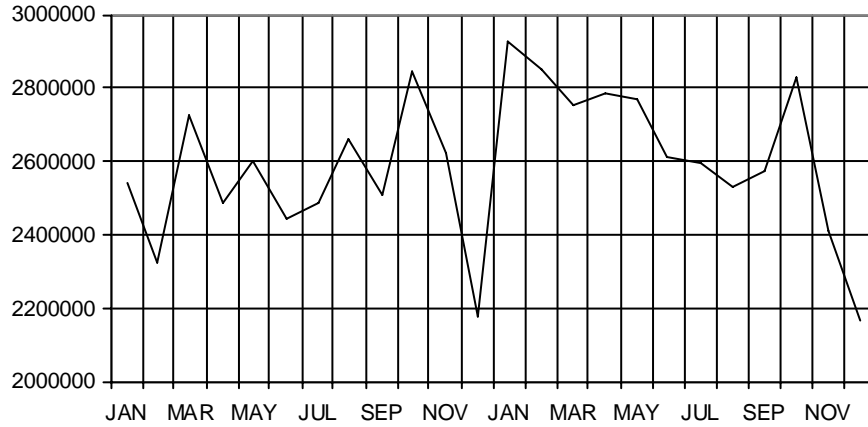
District	Billings to Date	Billings to Date	% Change	To Date % of Billings	To Date % of Billings
	2007	2008		2007	2008
Total	849634.3	863305.1	1.6	100	100
District 1	30429.8	31817.0	4.6	3.6	3.7
District 2	80745.4	80042.3	-0.9	9.5	9.3
District 3	167544.6	166346.0	-0.7	19.7	19.3
District 4	119062.3	110504.8	-7.2	14.0	12.8
District 5	51365.5	56726.7	10.4	6.0	6.6
District 6	189023.0	200084.5	5.9	22.2	23.2
District 7	86765.6	90028.7	3.8	10.2	10.4
District 8	71643.2	78551.7	9.6	8.4	9.1
District 9	53054.5	49203.3	-7.3	6.2	5.7

NATIONAL



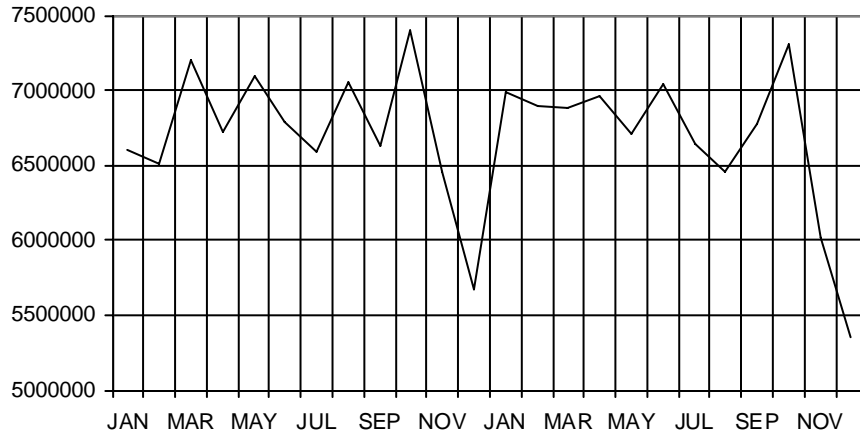
NATIONAL	Current Year	JAN	FEB	MAR	APR	MAY	JUN	JUL	AUG	SEP	OCT	NOV	DEC
Gain or Loss	Monthly	3.8	8.5	-2.2	8.4	3.1	4.2	9.6	-2.9	4.6	-1.4	-7.0	-9.3
% Change	Cumulative	3.8	6.1	3.1	4.4	4.2	4.2	4.9	3.9	4.0	3.4	2.5	1.6

DISTRICT 1: CONN.-MAINE-MASS.-N.H.-R.I.-VT.



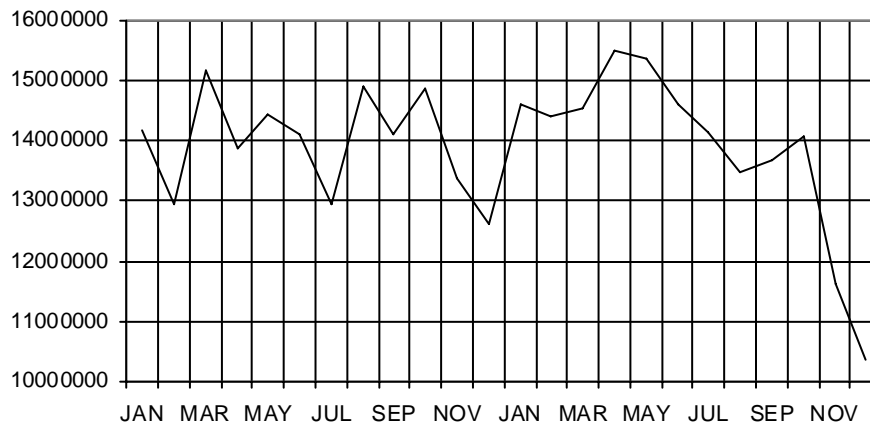
DISTRICT 1	Current Year	JAN	FEB	MAR	APR	MAY	JUN	JUL	AUG	SEP	OCT	NOV	DEC
Gain or Loss	Monthly	15.1	22.8	1.0	11.9	6.4	7.0	4.5	-4.9	2.6	-0.5	-8.0	-0.4
% Change	Cumulative	15.1	18.8	12.4	12.3	11.1	10.4	9.6	7.7	7.1	6.3	4.9	4.6

DISTRICT 2: N.Y.-N.J.-E.PA.-MD.



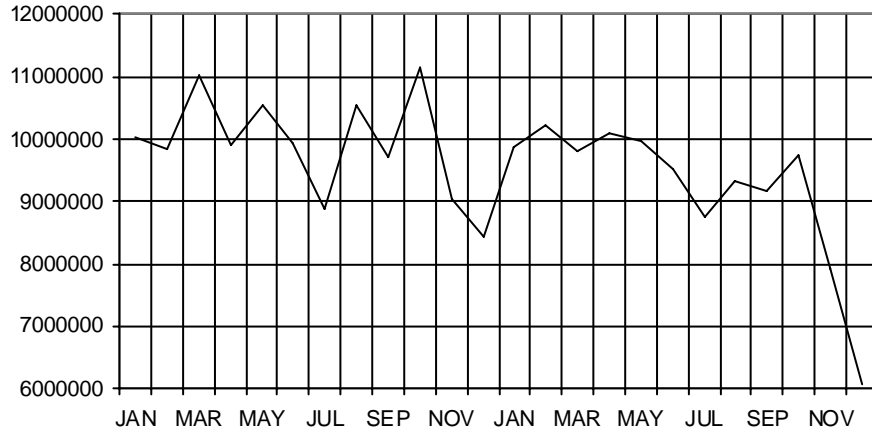
DISTRICT 2	Current Year	JAN	FEB	MAR	APR	MAY	JUN	JUL	AUG	SEP	OCT	NOV	DEC
Gain or Loss	Monthly	5.9	5.9	-4.5	3.5	-5.5	3.6	1.0	-8.5	2.2	-1.3	-6.8	-5.6
% Change	Cumulative	5.9	5.9	2.2	2.5	0.9	1.3	1.3	0.0	0.3	0.1	-0.5	-0.9

DISTRICT 3: W.PA.-OHIO-IND.-KY.



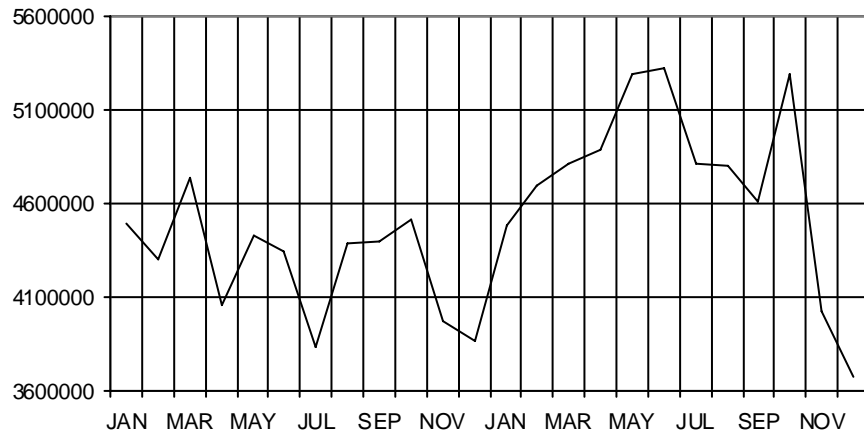
DISTRICT 3	Current Year	JAN	FEB	MAR	APR	MAY	JUN	JUL	AUG	SEP	OCT	NOV	DEC
Gain or Loss	Monthly	3.1	11.4	-4.2	11.6	6.6	3.5	9.3	-9.6	-3.1	-5.6	-13.2	-18.0
% Change	Cumulative	3.1	7.1	3.0	5.1	5.4	5.1	5.7	3.7	2.9	2.0	0.7	-0.7

DISTRICT 4: MICHIGAN



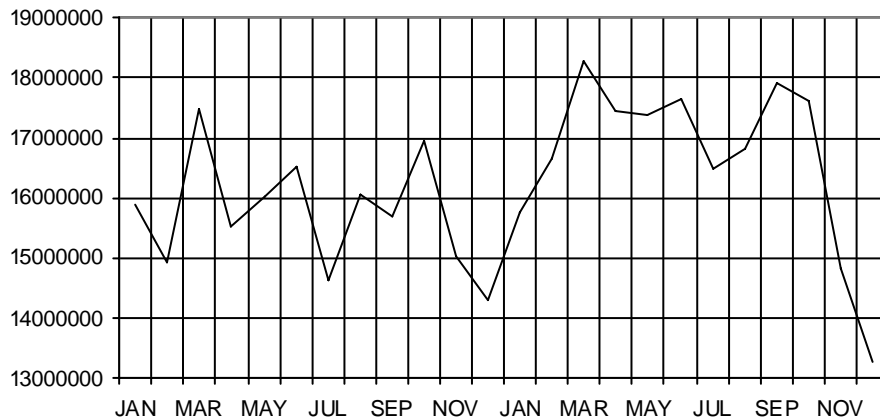
DISTRICT 4	Current Year	JAN	FEB	MAR	APR	MAY	JUN	JUL	AUG	SEP	OCT	NOV	DEC
Gain or Loss	Monthly	-1.6	4.2	-11.1	2.1	-5.5	-4.3	-1.4	-11.5	-5.3	-12.6	-12.6	-28.2
% Change	Cumulative	-1.6	1.2	-3.2	-1.9	-2.6	-2.9	-2.7	-3.9	-4.0	-5.0	-5.6	-7.2

DISTRICT 5: ALA.-FL.-GA.-MS.-N.C.-S.C.-TENN.-VA.



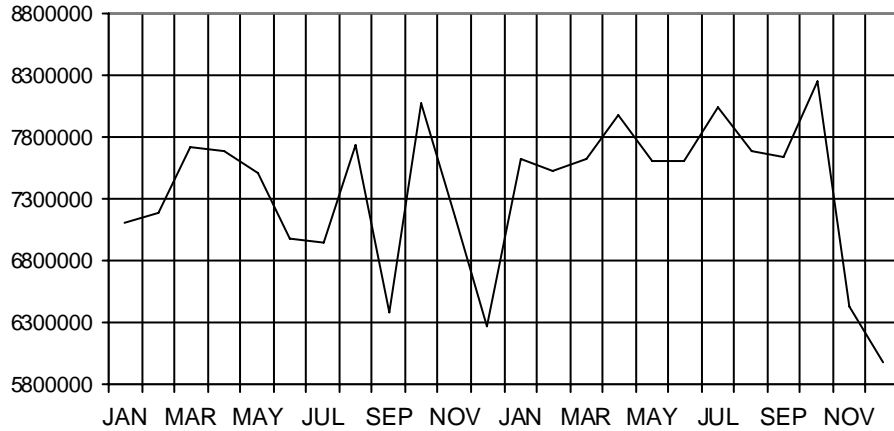
DISTRICT 5	Current Year	JAN	FEB	MAR	APR	MAY	JUN	JUL	AUG	SEP	OCT	NOV	DEC
Gain or Loss	Monthly	-0.2	9.1	1.3	20.4	19.6	22.5	25.8	9.6	4.7	17.1	1.1	-5.0
% Change	Cumulative	-0.2	4.4	3.3	7.2	9.7	11.8	13.6	13.1	12.1	12.7	11.7	10.4

DISTRICT 6: ILL.-WISC.-MINN.-MO.-IOWA-KANSAS



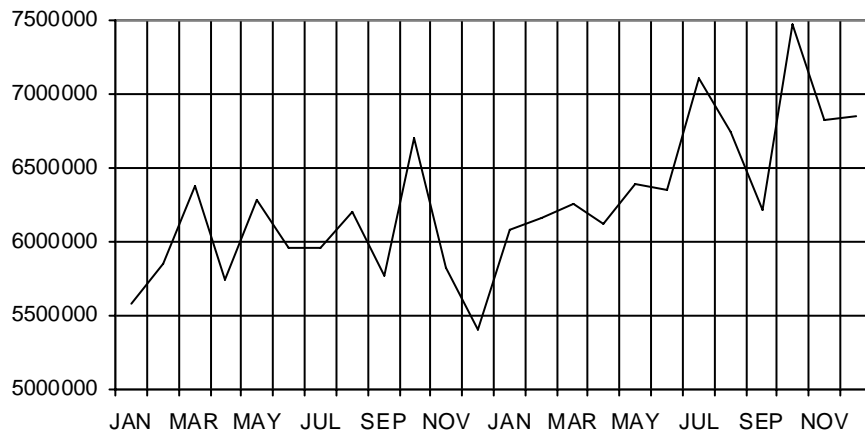
DISTRICT 6	Current Year	JAN	FEB	MAR	APR	MAY	JUN	JUL	AUG	SEP	OCT	NOV	DEC
Gain or Loss	Monthly	-0.8	11.6	4.6	12.2	8.4	6.7	12.7	4.9	14.3	3.8	-1.3	-7.3
% Change	Cumulative	-0.8	5.2	5.0	6.8	7.1	7.0	7.8	7.4	8.2	7.7	6.9	5.9

DISTRICT 7: ARIZ.-CA.-OR.-WA.



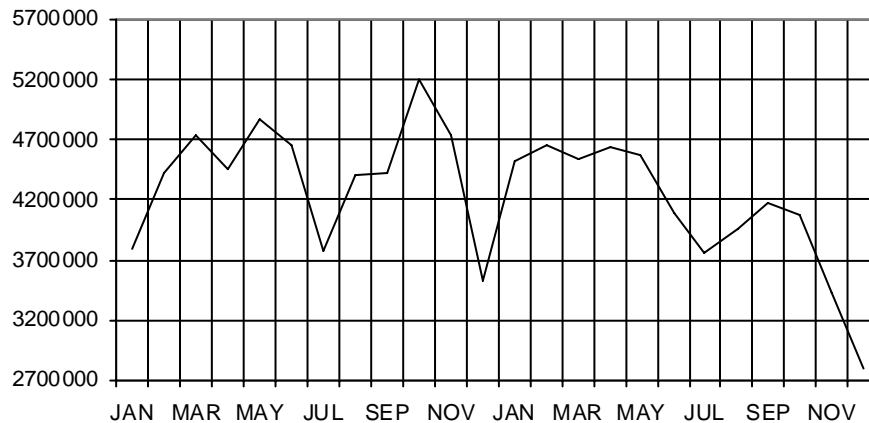
DISTRICT 7	Current Year	JAN	FEB	MAR	APR	MAY	JUN	JUL	AUG	SEP	OCT	NOV	DEC
Gain or Loss	Monthly	7.3	4.6	-1.1	3.8	1.3	8.9	15.9	-0.8	19.8	2.3	-10.1	-4.5
% Change	Cumulative	7.3	6.0	3.5	3.6	3.1	4.0	5.6	4.8	6.3	5.8	4.4	3.8

DISTRICT 8: TEX.-OKLA.-ARK.-COLO.



DISTRICT 8	Current Year	JAN	FEB	MAR	APR	MAY	JUN	JUL	AUG	SEP	OCT	NOV	DEC
Gain or Loss	Monthly	8.8	5.3	-1.8	6.5	1.7	6.7	19.2	8.7	7.8	11.4	17.2	26.8
% Change	Cumulative	8.8	7.0	3.8	4.5	3.9	4.4	6.5	6.8	6.9	7.4	8.2	9.6

DISTRICT 9: CANADA



DISTRICT 9	Current Year	JAN	FEB	MAR	APR	MAY	JUN	JUL	AUG	SEP	OCT	NOV	DEC
Gain or Loss	Monthly	19.0	5.2	-4.0	4.0	-6.3	-11.9	-0.5	-10.5	-5.6	-21.9	-28.0	-20.7
% Change	Cumulative	19.0	11.5	5.9	5.4	2.8	0.3	0.2	-1.2	-1.7	-4.0	-6.3	-7.3

MTI Monthly Analysis of National Billings

